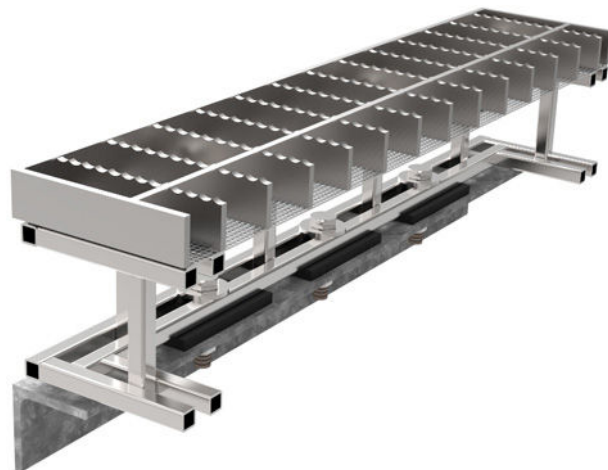


## Flare Deck Shield

### Key Features

- Open grid serrated floor panel bolted to heavy duty woven mesh ladder type heat shield
- Mesh aids cooling and allows free movement of air and liquids
- All stainless steel type 316L construction.
- Designed to withstand evenly distributed load of 5kN/m<sup>2</sup>
- Tested to front face surface temperature of 700°C.
- Penetrations and kick plates incorporated as required.
- Grid floor panels removable from top working surface
- No special tools required



### Locker Flare Deck Shield Installations



Flare Deck Heatshields replaced traditional 'Fire Brick' construction on the Forties Alpha Platform



Forties Charlie replacement Flare Deck